



Data Sheet

# Sage Distribution and Manufacturing Operations

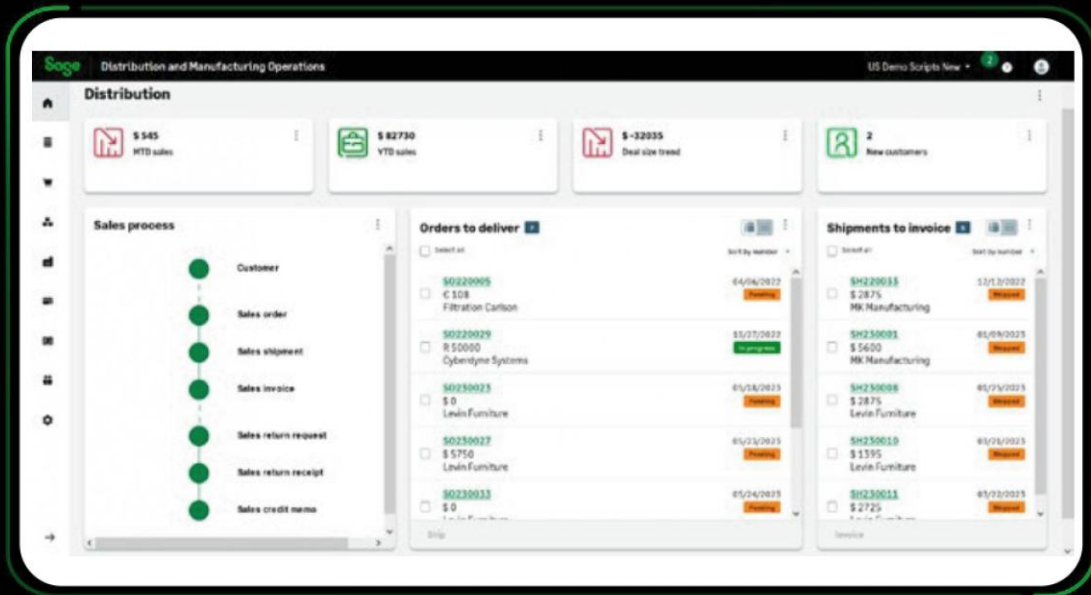
Remove complexity to scale  
growth and build resiliency  
for your business

Sage

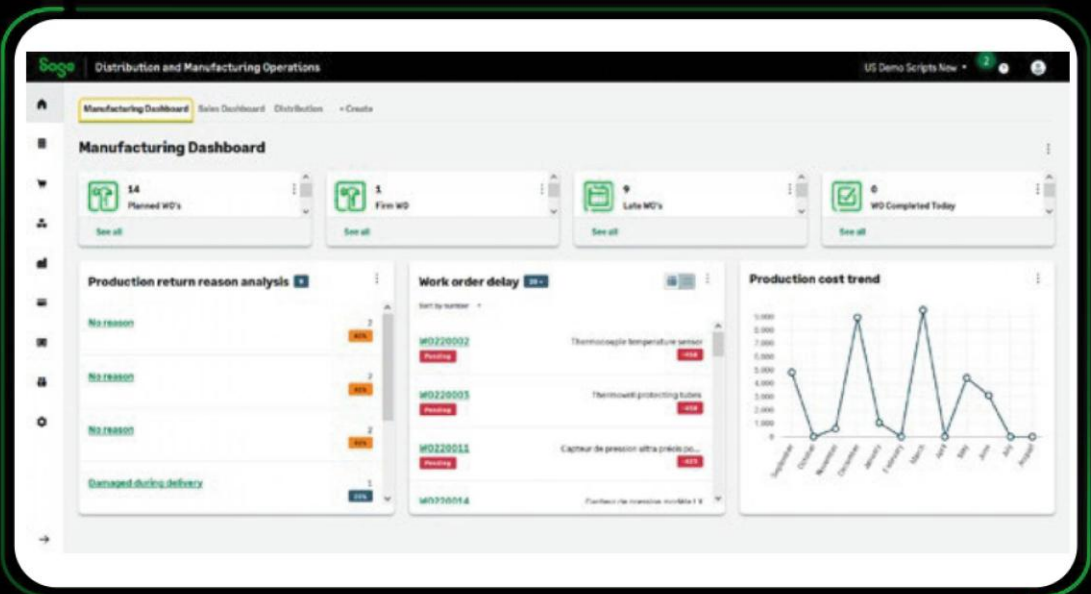
**IVERSON**  
Learn, Grow, Transform

# Overview

Sage Distribution and Manufacturing Operations (SDMO) is the only purpose-built, cloud native enterprise resource planning (ERP) solution that simplifies complex business processes by incorporating the best practices of thousands of customers, hundreds of partners, and decades of earning trust.



Simplify to gain the visibility and control you need to always know how much you have, how much you need to make, and how much you need to buy (and more).





# Key features

Sage Distribution and Manufacturing Operations helps teams across your company get more done by removing complexity around daily tasks. Efficiency gains reach new levels even when workflows, changes, and inventory are involved because SDMO focuses on the operational user and the item when automating processes and streamlining workflows.

## **Make and assemble**

Plan the most effective use of resources to optimize cost savings within all aspects of making and assembling products.

## **Sell and distribute**

Modernize best practices throughout your entire sales cycle from receiving orders to shipping goods and managing returns.

## **Buy and put away**

Simplify internal communication when ordering materials from suppliers with a guided and flexible process.

## **Move and store**

Use real-time data and user-defined alerts to manage and maintain inventory across the full lifecycle.

## **Design Items**

Design with cost visibility and establish cost controls down to a bill of material and routing level.

## **Accounting and Financial Management**

Deep multidimensional accounting and approval workflow automation for efficient financial operations across entities.

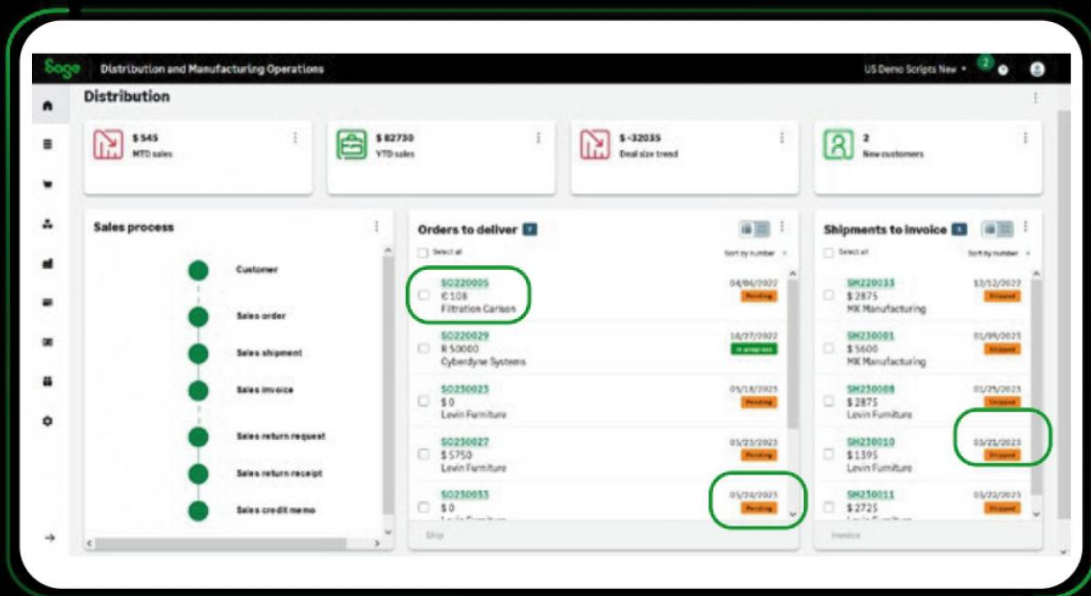


# Key benefits

## Simplify

Do more than automate to make productivity gains and cost reductions throughout your business; remove friction and enable quicker, data-based decisions.

- **Remove complexity** with user-defined approval workflows, tailorable screen views, and access permissions.
- **Enable users to do more** by automating low-value-add tasks, enabling self-serve reporting, and by providing role-based, task-centric dashboards.
- **Spend more time focusing on what is important** than reacting to urgent issues.
  - Standardize processes to transform to management by exception.
  - Automate processes and streamline workflows to reduce data entry and the risk of errors.
- Be easy to do business with and provide continuous value to your internal and external stakeholders when your teams, from sales to shipping, use **one source of real-time data** within a multi-entity, multi-language, and multi-currency framework.
- **Help attract and retain employees** with a modern, sleek, and intuitive solution that makes collaboration effortless and keeps everyone on the same page as a single source of truth.

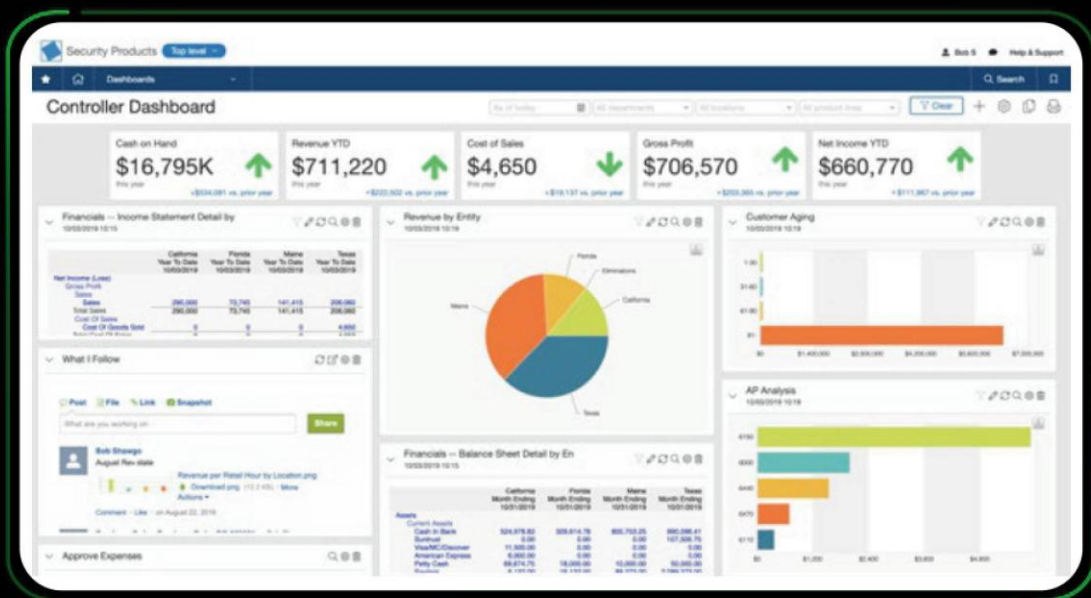


Stop leaving money on the table and improve cash flow with the entire order to sales process visible on a single screen. Process orders and invoices straight from hyper-linked dashboards you can easily create.

## Know

Gain line of site across your business for a better understanding into where to grow revenue and prioritize resources.

- **Gain new levels** of operational visibility and do-ability with widgets that make it easy to build your own dashboards containing work order and production information.
- **Shift inventory to a competitive advantage** with real-time visibility and re-order points.
- **Slice and dice data** your way with dimensions and widgets so you can go to market quicker and be decision ready when opportunities arise.
- **Avoid missing out** on cost savings and improve margins with detailed costing of manufacturing components and activities.
- **Drive improved business performance** with automated data capture so you can spend more time analyzing the numbers and less time gathering the numbers.



SDMO seamlessly integrates with the Sage Intacct Core Financials.

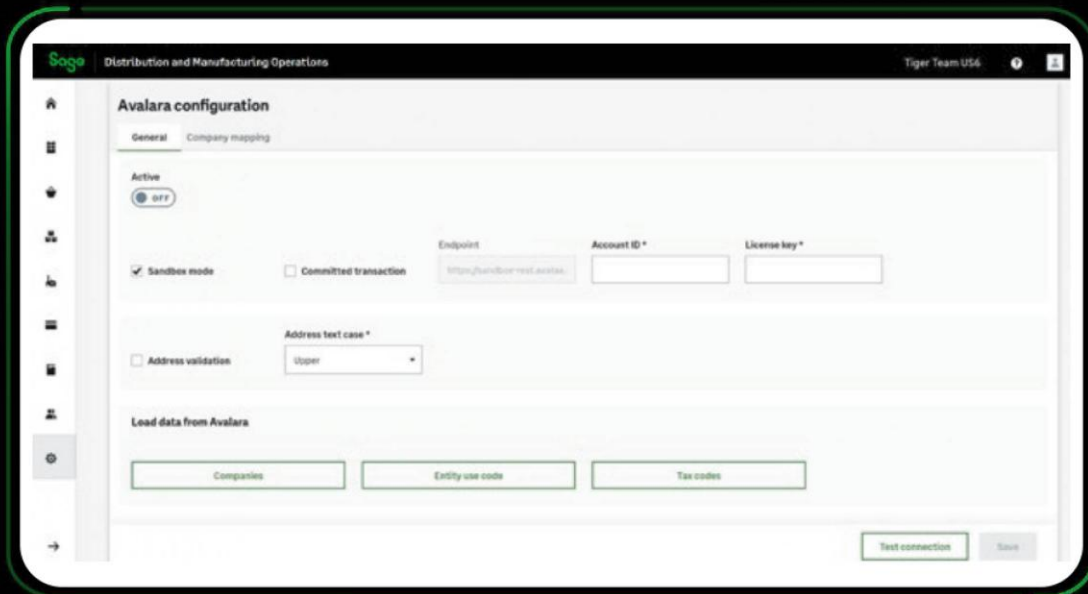


## Innovate

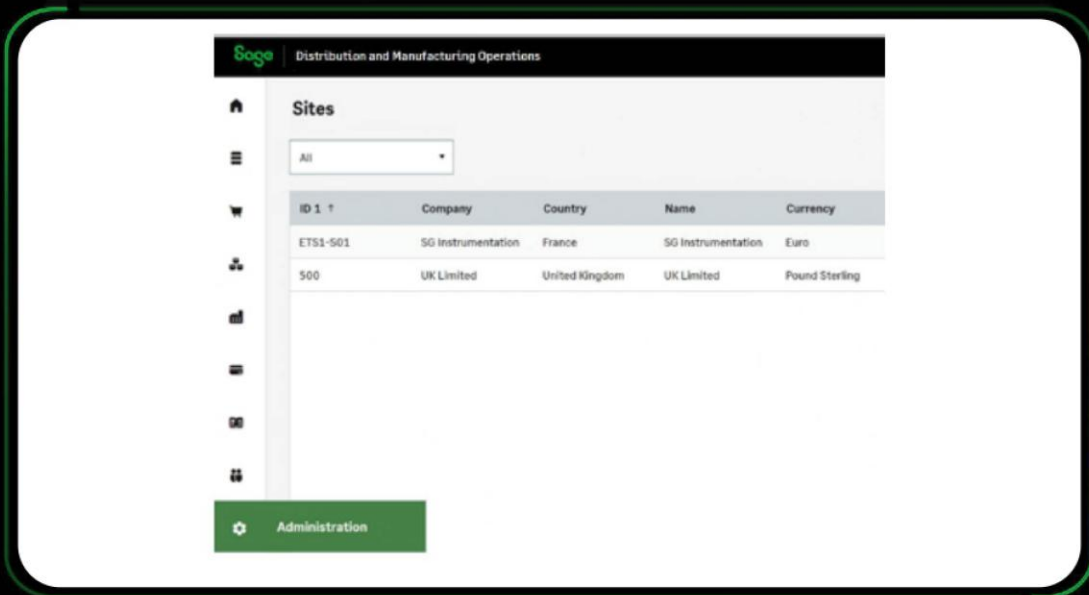
Position your company to scale and grow and be able to leverage the latest technology such as artificial intelligence (AI) for unparalleled levels of resiliency and competitiveness.

- Position your business to be ready to leverage the latest technology using SDMO's open-API framework to easily integrate with best-in-class solutions.
- Keep and build your customer base while gaining a competitive edge when you use your data to shift relationships with your customers and suppliers from transactional to strategic in nature.
- Gain peace of mind by getting out of the server business and replacing the burden of disruptive upgrades, backups and security with uptime guarantees, non-breaking upgrades, security, and anywhere/anytime productivity.
- Transform manual processes into secure digital workflows where data is accurate, up to date, and visible and decisions on needed changes can be made before they become issues.

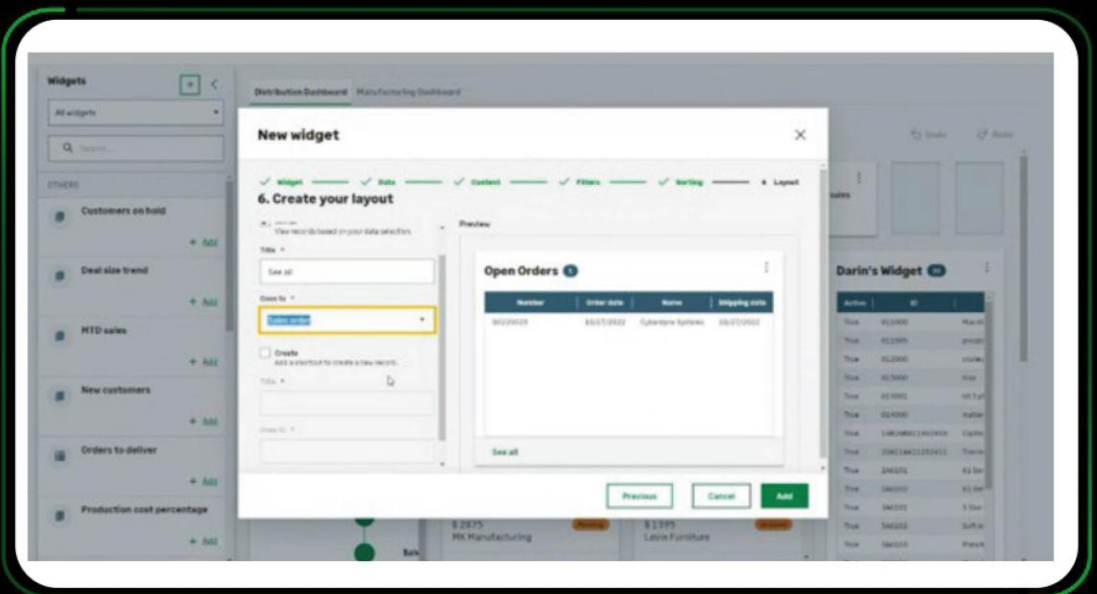
Sage Distribution and Manufacturing Operations was born out of the belief that as labor issues, supply chains, regulations, and well, let's just say the world, grow increasingly complex, securely empowering your small to midsize distribution or discrete manufacturing company to move to the cloud and reliably deliver profitable value to your internal and external stakeholders does not have to be.



The Avalara integration automates compliance in your ERP anywhere you do business for unhindered growth and time savings.



Things change. We get it. From multi-tenant, multi-language, multi-currency, and multi-legislation to a secure, cloud-native open architecture, we believe evolving to meet ever-changing customer needs and market demands should be simple and cost effective.



See how Sage Distribution and Manufacturing Operations can get you up and running quickly on a modern, strategic framework and sign up for your demo today.

A Sage partner



**PT Iverson Technology**

PT. Bisnis ERP Mandiri is a subsidiary of PT. Iverson Technology was founded by IT professionals working in various industries and focuses on providing services in fields such as ERP Implementation, IT Consulting, Support and Training to customer.

**Rukan CBD Greenlake,  
Jl. Green Lake City Boulevard  
No.08 Blok K, RT 007/RW 009,  
Petir, Kec. Cipondoh,  
Kota Tangerang, Banten 15148**

<https://iverson.co.id>

<https://bisnis-erp.com>

**+62 8138-5159-207**



©2023 The Sage Group plc or its licensors. All rights reserved. Sage, Sage logos, and Sage product and service names mentioned herein are the trademarks of Sage Global Services Limited or its licensors. All other trademarks are the property of their respective owners.